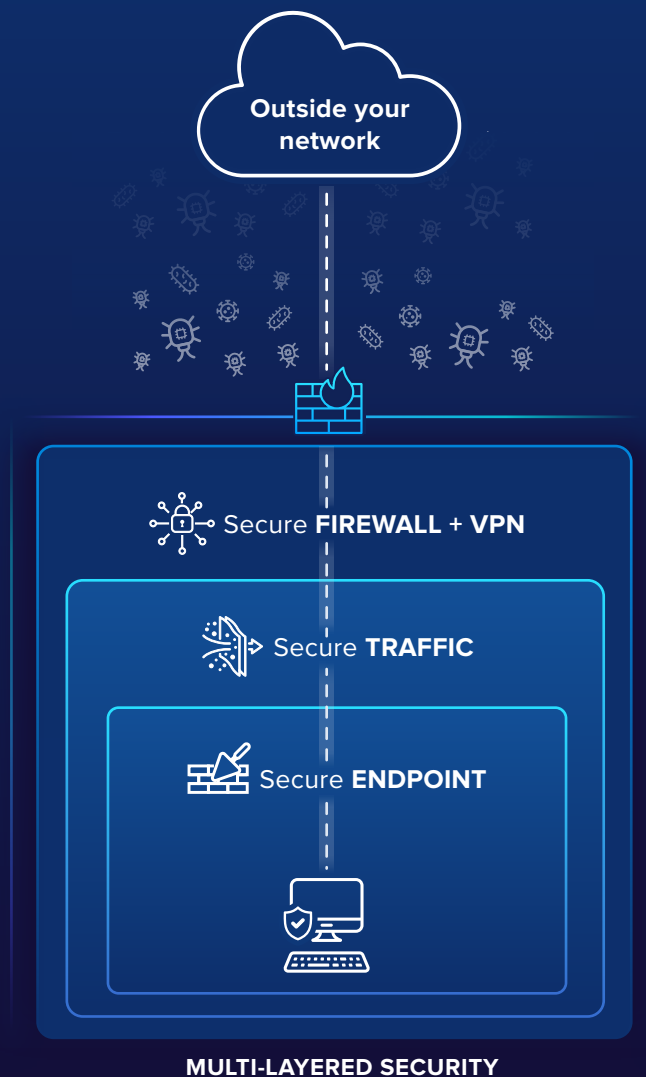


# Unlimited | Network Security

Multilayer security to prevent, detect, and address threats to your network



**Unlimited | Network Security** checks the boxes of your key security needs

- ✓ **Secure Network with Firewall & intrusion prevention:** Block threats at your doorway
- ✓ **Secure Traffic with Web & Email Antivirus:** Clean email & web traffic as it comes into your network
- ✓ **Secure Endpoints with Vulnerability monitoring and patching:** Fix vulnerabilities & holes in your security



## Secure Network: Firewall and Intrusion detection

- Configure your firewall with easy-to-use traffic rules, controlling in- and outbound communications by URL, application, traffic type and more
- Intrusion detection and prevention constantly monitors inbound and outbound network communications for suspicious activity. Log or block the communications depending on the severity
- Prevent viruses, worms, Trojans and spyware from entering your network. Going beyond checking files for malicious code; it scans your network traffic for potential attacks.

Name	Source	Destination	Service	IP version
Ping	Any	Firewall	Ping	IPv4
Remote administration	Any	Firewall	Kerio Control WebAdmin	IPv4
VPN Services	Any	Firewall	IPsec services	IPv4
Web Services	Any	Firewall	HTTP HTTPS	IPv4
Kerio Operator Services	Internet Interfaces	Firewall	Kerio Operator services UDP 10000 - 20000	IPv4
Kerio Connect Services	Any	Firewall	Kerio Connect services	IPv4
Allow SMTP from Kerio Connect	10.10.10.12	Internet Interfaces	SMTP	IPv4
Block SMTP from LAN	Trusted/Local Interfaces	Any	SMTP	IPv4
Internet access (NAT)	Trusted/Local Interfaces	Internet Interfaces	Any	IPv4
Local traffic	Firewall	Trusted/Local Interfaces	Any	IPv4
Firewall traffic	Firewall	Any	Any	IPv4
IPv6 traffic from the Internet	Internet Interfaces	Any	Any	IPv6
IPv6 traffic	Any	Any	Any	IPv6
Block other traffic	Any	Any	Any	Any



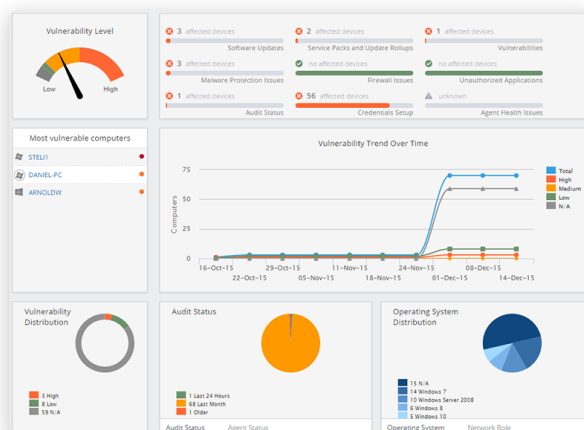
## Secure Traffic: Anti-virus & malware protection

- Why trust email security to one antivirus engine when you can have the combined power of four. GFI MailEssentials can engage the power of leading brands including BitDefender, Avira, Kaspersky, and Cyren
- Each engine features its own heuristics and detection methods. You gain maximum protection for your email environment to block email-borne viruses and other malware more effectively
- Advanced web content filtering covering 99.9% of the active web combined with 4 advanced email content filtering engines you can easily protect your network traffic and ensure it is tailored to your business.



## Secure Endpoints: Patch & Vulnerability Management

- Automatically discover and group all the elements of your network: computers, laptops, mobile phones, tablets, printers, servers, virtual machines, routers and switches
- Scan your network for missing patches and vulnerabilities. Over 5,000 patches are released every year; any one may be the flaw hackers target
- Automatically deploy patches centrally, or by deploying agents on machines and save server processing. Identify top vulnerabilities and take action with clear priority
- Get the automated, formatted reports auditors need to demonstrate compliance for the multiple requirements in PCI DSS, HIPAA, SOX, GLBA, PSN, and CoCo regulations.



*All this for less cost than what other vendors charge for fewer capabilities*

**Learn more at [www.gfi.com/unlimited-network-security](http://www.gfi.com/unlimited-network-security)**